



# 205 SERIES STG

BSP / NPTF  
DIN3852 / SAE



Poppet valve closing system  
BSP, NPTF, DIN2353, DIN3852, SAE/ORB and other threads upon request.  
AISI 316 available only by minimum quantities.

### • Materials

Carbon Steel *EN-10277-3 / AISI 316L*

Seals: NBR, Viton or EPDM

Back-up-ring: PTFE

Springs: *Carbon Steel DIN 17233/84(B)*

• **Applications:** Designed for Oil hydraulic Applications according to European Directive 97.23.EC Special for American market

### • Equivalence

FASTER CVV  
ARGUS HD  
VOSWINKEL HS

### • Working temperature (Seals)

	NBR	Viton	EPDM
+	+100°C	+200°C	+150°C
-	-30°C	-10°C	-40°C

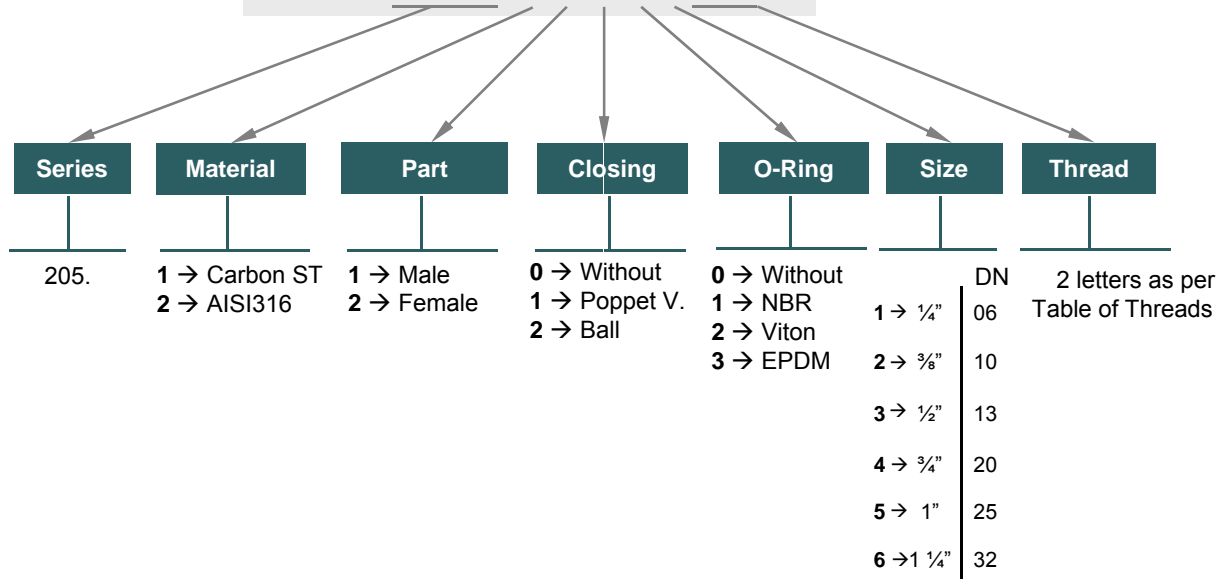
• **Sectors:** Industrial, Agricultural, Construction machinery.



### MODEL STRUCTURE

Example;

**205.12115 AF**



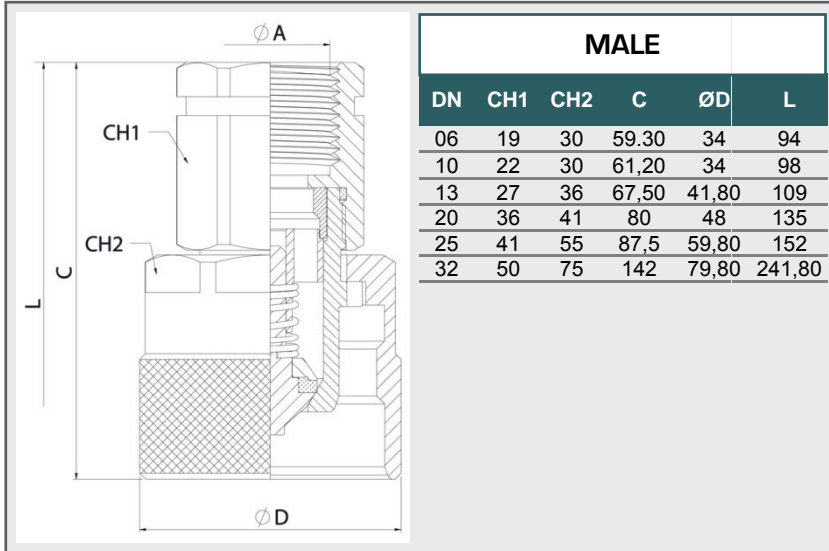
**205-1**



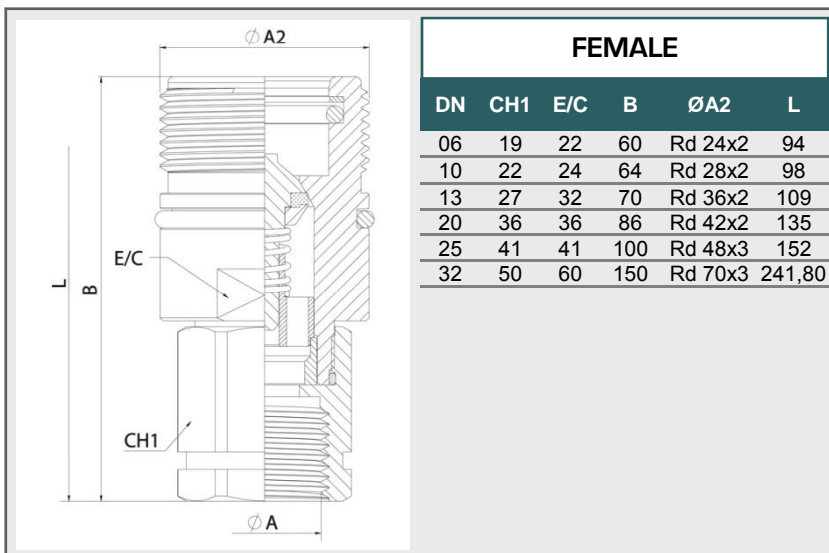


# 205 SERIES STG

BSP / NPTF  
DIN3852 / SAE



STANDARD MODELS			
DN	ØA	MALE	FEMALE
06	1/4" BSP	205.11111AB	205.12111AB
	1/4" NPTF	205.11111BB	205.12111BB
	M14x1,5	205.11111NC	205.12111NC
10	1/4" BSP	205.11112AB	205.12112AB
	3/8" BSP	205.11112AC	205.12112AC
	3/8" NPTF	205.11112BC	205.12112BC
13	M16x1,5	205.11112ND	205.12112ND
	3/8" BSP	205.11113AC	205.12113AC
	1/2" BSP	205.11113AD	205.12113AD
	1/2" NPTF	205.11113BD	205.12113BD
	M18x1,5	205.11113NE	205.12113NE
	M22x1,5	205.11113NG	205.12113NG
20	3/4" -16ORB	205.11113GF	205.12113GF
	7/8" -14ORB	205.11113GH	205.12113GH
	3/4" BSP	205.11114AE	205.12114AE
25	3/4" NPTF	205.11114BE	205.12114BE
	M22x1,5	205.11114NG	205.12114NG
	3/4" BSP	205.11115AE	205.12115AE
32	1" BSP	205.11115AF	205.12115AF
	1" NPTF	205.11115BF	205.12115BF
	1 1/4" BSP	205.11116AG	205.12116AG
32	1 1/4" NPTF	205.11116BG	205.12116BG
	1 1/2" BSP	205.11116AH	205.12116AH
	1 1/2" NPTF	205.11116BH	205.12116BH





# 205 SERIES STG

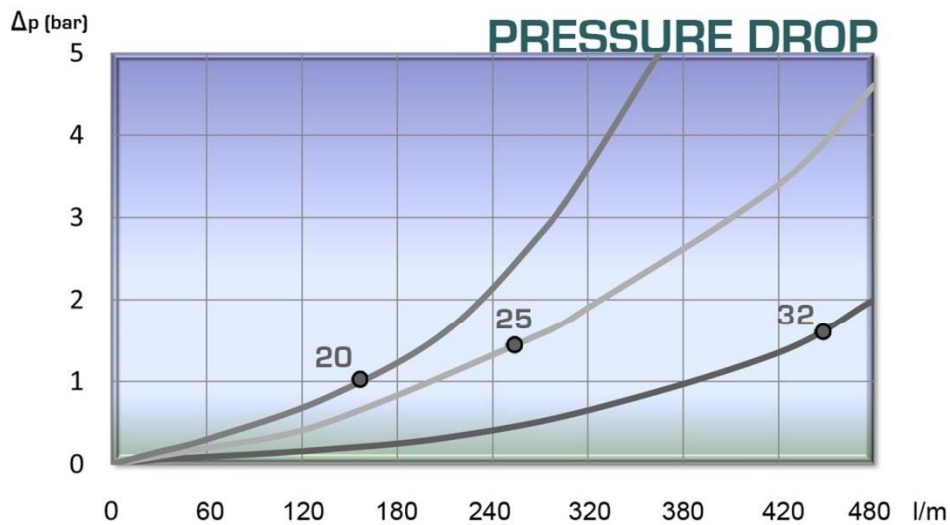
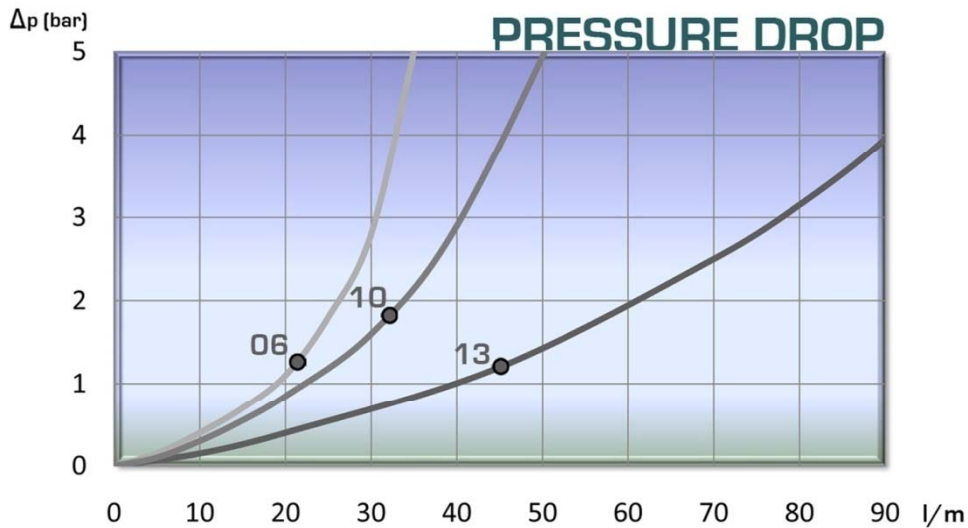
BSP / NPTF  
DIN3852 / SAE



## TECHNICAL DATA

DN	Rated Flow	Min Burst Pressure (bar)			Max. Working Pressure*
		Male	Female	Coupled	
06	12 l/min	1580	1500	1800	450 bar
10	32 l/min	1750	1680	1800	450 bar
13	75 l/min	1580	1500	1600	400 bar
20	145 l/min	1520	1400	1600	400 bar
25	255 l/min	1200	1150	1200	300 bar
32	440 l/min	1450	1520	1650	410 bar

\* Safety factor 1:4  
Carbon Steel Models



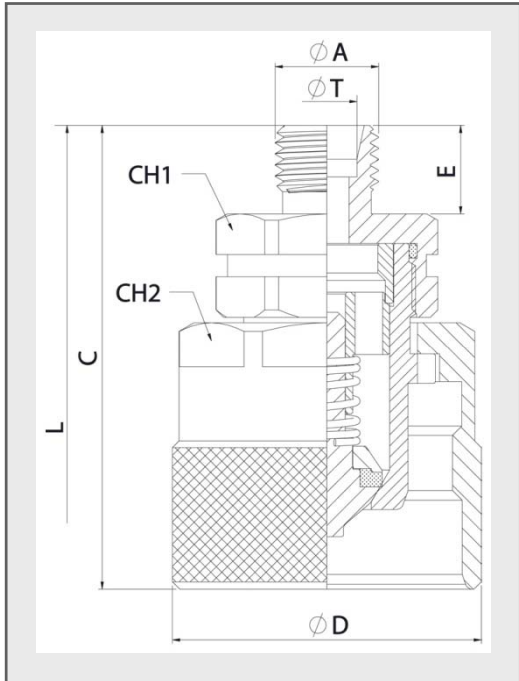
**205-3**



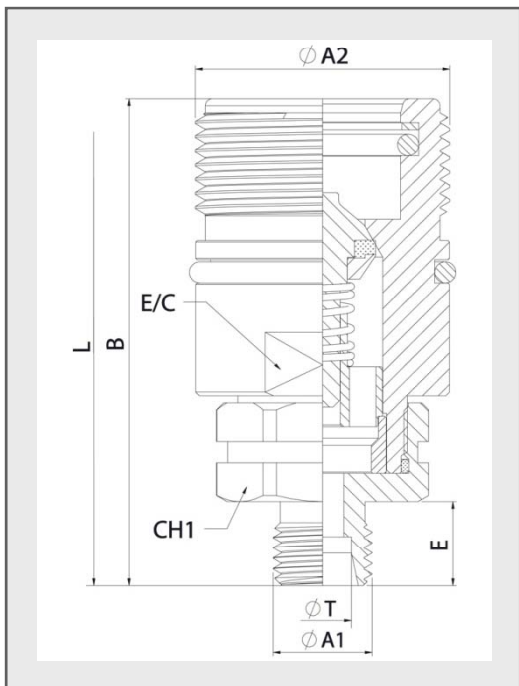
# 205 SERIES

## STG

DIN2353



STANDARD MALE MODELS										
DN	ØA	ØT	REF.		CH1	CH2	C	ØD	E	L
06	M12x1,5	6L	205.11111JB	450Bar	19	30	49,30	34	12	93,80
	M14x1,5	8L	205.11111JC							
	M18x1,5	12L	205.11112JE							
10	M14x1,5	8L	205.11112JC	450Bar	22	30	60,20	34	12	96
	M16x1,5	10L	205.11112JD							
	M16x1,5	8S	205.11112KD							
	M18x1,5	10S	205.11112KE							
	M20x1,5	12S	205.11112KF							
	M14x1,5	8L	205.11113JC							
13	M16x1,5	10L	205.11113JD	400Bar	27	36	63,50	41,80	12	101
	M18x1,5	12L	205.11113JE							
	M22x1,5	15L	205.11113JG							
	M26x1,5	18L	205.11113JI							
	M18x1,5	10S	205.11113KE							
	M20x1,5	12S	205.11113KF							
	M22x1,5	14S	205.11113KG							
	M24x1,5	16S	205.11113KH							
	M18x1,5	12L	205.11114JE							
	M22x1,5	15L	205.11114JG							
20	M26x1,5	18L	205.11114JI	400Bar	36	41	72	48	12	119
	M30x2	22L	205.11114JJ							
	M22x1,5	14S	205.11114KG							
	M24x1,5	16S	205.11114KH							
	M30x2	20S	205.11114KJ							
	M26x1,5	18L	205.11115JI							
25	M30x2	22L	205.11115JJ	300Bar	41	55	70,50	59,80	18	146
	M36x2	28L	205.11115JK							
	M45x2	35L	205.11115JM							
	M30x2	20S	205.11115KJ							
	M36x2	25S	205.11115KK							
	M42x2	30S	205.11115KL							
	M52x2	38S	205.11115KN							
	M42x2	30S	205.11116KL							
32	M42x2	30S	205.11116KL	300Bar	50	75	143	79,80	20	243,80
	M52x2	38S	205.11116KN							



STANDARD FEMALE MODELS										
DN	ØA	ØT	REF.		CH1	E/C	B	ØA2	E	L
06	M12x1,5	6L	205.12111JB	450Bar	19	22	59	Rd 24x2	12	93,80
	M14x1,5	8L	205.12111JC							
	M18x1,5	12L	205.12112JE							
10	M14x1,5	8L	205.12112JC	450Bar	22	24	63	Rd 28x2	12	96
	M16x1,5	10L	205.12112JD							
	M16x1,5	8S	205.12112KD							
	M18x1,5	10S	205.12112KE							
	M20x1,5	12S	205.12112KF							
	M14x1,5	8L	205.12113JC							
13	M16x1,5	10L	205.12113JD	400Bar	27	32	66	Rd 36x2	12	101
	M18x1,5	12L	205.12113JE							
	M22x1,5	15L	205.12113JG							
	M26x1,5	18L	205.12113JI							
	M18x1,5	10S	205.12113KE							
	M20x1,5	12S	205.12113KF							
	M22x1,5	14S	205.12113KG							
	M24x1,5	16S	205.12113KH							
	M18x1,5	12L	205.12114JE							
	M22x1,5	15L	205.12114JG							
20	M26x1,5	18L	205.12114JI	400Bar	36	36	84	Rd 42x2	18	131
	M30x2	22L	205.12114JJ							
	M22x1,5	14S	205.12114KG							
	M24x1,5	16S	205.12114KH							
	M30x2	20S	205.12114KJ							
	M26x1,5	18L	205.12115JI							
25	M30x2	22L	205.12115JJ	300Bar	41	41	97	Rd 48x3	18	146
	M36x2	28L	205.12115JK							
	M45x2	35L	205.12115JM							
	M30x2	20S	205.12115KJ							
	M36x2	25S	205.12115KK							
	M42x2	30S	205.12115KL							
	M52x2	38S	205.12115KN							
	M42x2	30S	205.12116KL							
32	M42x2	30S	205.12116KL	300Bar	50	60	151	Rd 70x3	20	243,80
	M52x2	38S	205.12116KN							

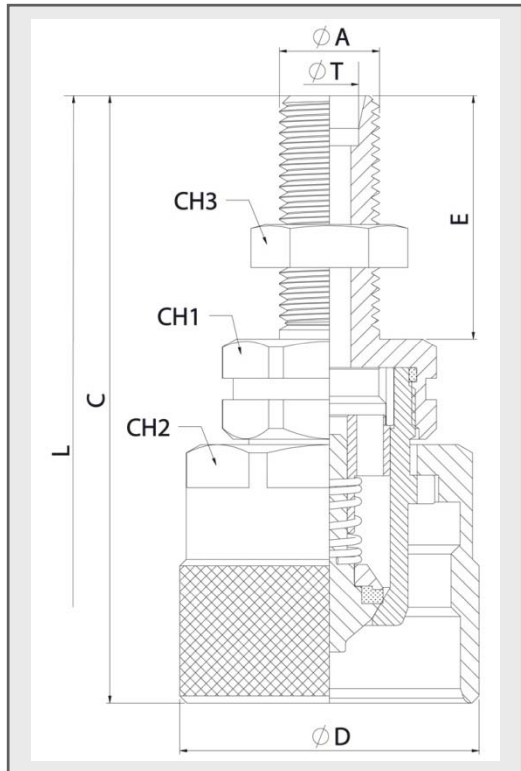




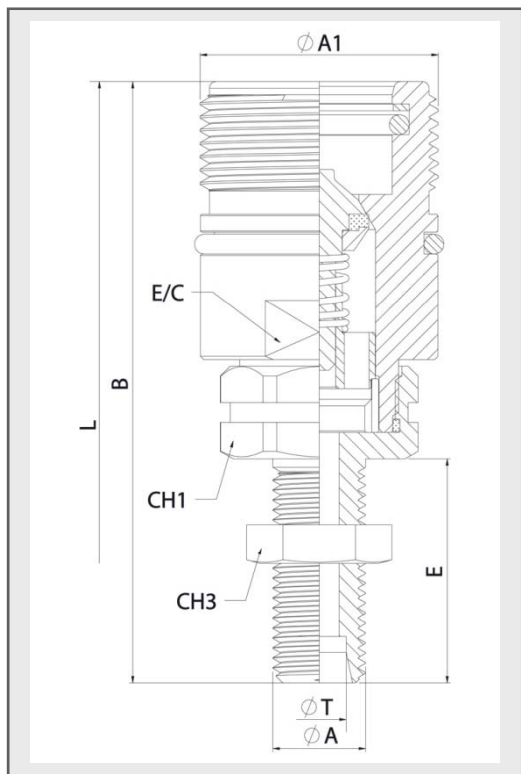
# 205 SERIES

## STG

DIN2353



STANDARD MALE MODELS														
DN	ØA	ØT	REF.		CH1	CH2	CH3	C	ØD	E	L			
06	M12x1,5	6L	205.11111LB	450Bar	19	30	19	71,30	34	25	128,80			
	M14x1,5	8L	205.11111LC					80,30				34	146,80	
	M14x1,5	8L	205.11112LC									34	151,50	
10	M16x1,5	10L	205.11112LD	450Bar	22	30	22	65,20	34	26	138,20			
	M16x1,5	8S	205.11112MD											
	M18x1,5	10S	205.11112ME					24				75,20	27	
13	M20x1,5	12S	205.11112MF	400Bar	27	36	30	22	41,80	33	157,50			
	M14x1,5	8L	205.11113LC					19				85,50	34	156,50
	M16x1,5	10L	205.11113LD					22				86,50	35	157,50
	M18x1,5	12L	205.11113LE					24				75,50	24	136,50
	M22x1,5	15L	205.11113LG					27						
	M26x1,5	18L	205.11113LI					30				86,50	33	157,50
	M18x1,5	10S	205.11113ME					24				75,50	24	136,50
	M20x1,5	12S	205.11113MF					22						
	M22x1,5	14S	205.11113MG					27				86,50	35	157,50
20	M24x1,5	16S	205.11113MH	400Bar	36	41	30	30	48	33	171			
	M18x1,5	12I	205.11114LE					24				86	26	157
	M22x1,5	15L	205.11114LG					27						
	M26x1,5	18L	205.11114LI					30				93	33	171
	M30x2	22L	205.11114LJ					36				94	34	173
	M24x1,5	16S	205.11114MH					30				89	29	173
	M30x2	20S	205.11114MJ					36				96	36	163
	M26x1,5	18L	205.11115LI					30				99,50	33	185,50
	M30x2	22L	205.11115LJ					36				100,50	34	187,50
25	M36x2	28L	205.11115LK	300Bar	41	55	41	100,50	59,80	36	191,50			
	M45x2	35L	205.11115LM					55				102,50	35	189,50
	M30x2	20S	205.11115MJ					36				101,50	35	189,50
	M36x2	25S	205.11115MK					41				104,50	38	195,50
	M42x2	30S	205.11115ML					50				106,50	40	199,50
	M52x2	38S	205.11115MN					65						
32	M42x2	30S	205.11116ML	300Bar	50	75	50	143	40	284				



STANDARD FEMALE MODELS														
DN	ØA	ØT	REF.		CH1	E/C	CH3	B	ØA1	E	L			
06	M12x1,5	6L	205.12111LB	450Bar	19	22	19	72	Rd 24x2	25	128,80			
	M14x1,5	8L	205.12111LC					81				34	146,80	
	M14x1,5	8L	205.12112LC					19				85	34	151,50
10	M16x1,5	10L	205.12112LD	450Bar	22	24	22	77	Rd 28x2	26	127,50			
	M16x1,5	8S	205.12112MD											
	M18x1,5	10S	205.12112ME					24				780	27	138,20
13	M20x1,5	12S	205.12112MF	400Bar	27	32	30	22	Rd36x2	35	157,50			
	M14x1,5	8L	205.12113LC					19				88	34	156,50
	M16x1,5	10L	205.12113LD					22				89	35	157,50
	M18x1,5	12L	205.12113LE					24				78	24	136,50
	M22x1,5	15L	205.12113LG					27						
	M26x1,5	18L	205.12113LI					30				89	35	157,50
	M18x1,5	10S	205.12113ME					24				78	24	136,50
	M20x1,5	12S	205.12113MF					22						
	M22x1,5	14S	205.12113MG					27				88	35	157,50
20	M24x1,5	16S	205.12113MH	400Bar	36	36	30	30	Rd 42x2	33	171			
	M18x1,5	12I	205.12114LE					24				92	26	157
	M22x1,5	15L	205.12114LG					27						
	M26x1,5	18L	205.12114LI					30				93	33	171
	M30x2	22L	205.12114LJ					36				99	34	173
	M24x1,5	16S	205.12114MH					30				100	29	173
	M30x2	20S	205.12114MJ					36				95	36	163
	M26x1,5	18L	205.12115LI					30				112	33	185,50
	M30x2	22L	205.12115LJ					36				113	34	187,50
25	M36x2	28L	205.12115LK	300Bar	41	41	41	113	Rd 48x3	36	191,50			
	M45x2	35L	205.12115LM					55				115	35	189,50
	M30x2	20S	205.12115MJ					36				114	35	189,50
	M36x2	25S	205.12115MK					41				117	38	195,50
	M42x2	30S	205.12115ML					50				119	40	199,50
	M52x2	38S	205.12115MN					65						
32	M42x2	30S	205.12116ML	300Bar	50	60	50	171	Rd 70x3	40	284			





# 205 SERIES STG

PLUGS  
& CAPS

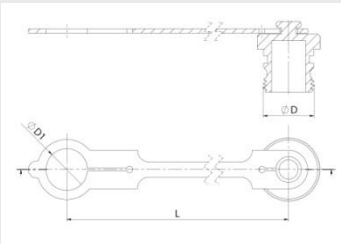
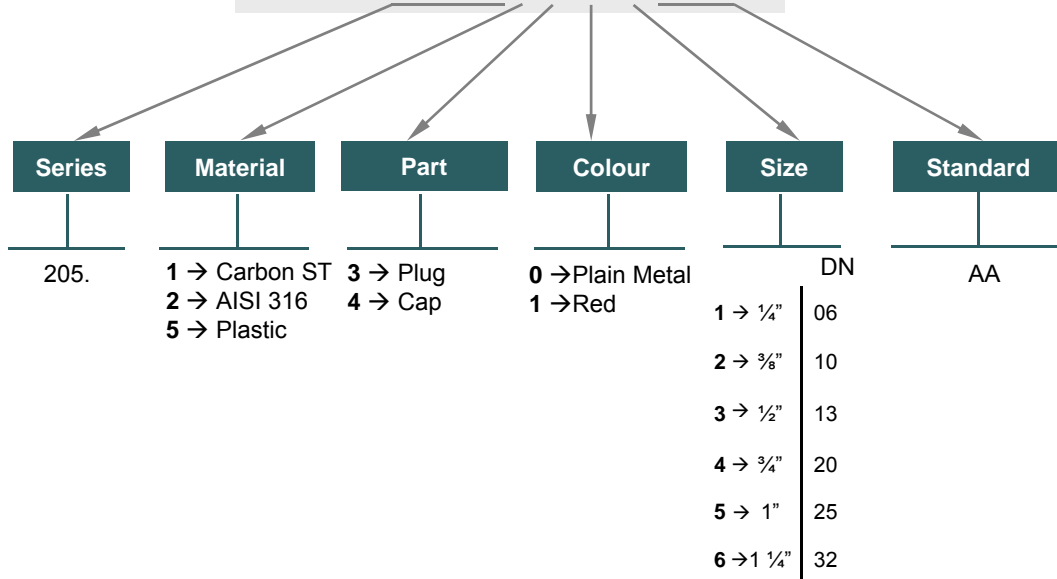


STG SERIES PLUGS, CAPS and have been designed to protect FEMALE (coupler) or MALE (nipple) parts while they are disconnected.

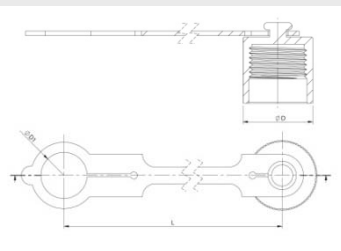
## MODEL STRUCTURE

Example;

### 205.5414 AA



PLUG				
DN	REF.	ØD	ØD1	L
06	205.5311AA	Rd 24x2	20	90
10	205.5312AA	Rd 28x2	24	100
13	205.5313AA	Rd 36x2	29,50	135
20	205.5314AA	Rd 42x2	37	187
25	205.5315AA	Rd 48x3	41	145
32	205.5316AA	Rd 70x2	55	200



CAP				
DN	REF.	ØD	ØD1	L
06	205.5411AA	Rd 24x2	20	90
10	205.5412AA	Rd 28x2	24	100
13	205.5413AA	Rd 36x2	29,50	135
20	205.5414AA	Rd 42x2	37	187
25	205.5415AA	Rd 48x3	41	145
32	205.5416AA	Rd 70x2	55	200